

THE ANNUAL
RUBIN REPORT
MUSEUM
OF
ART

THE
FUTURE
IS
FLUID

2018

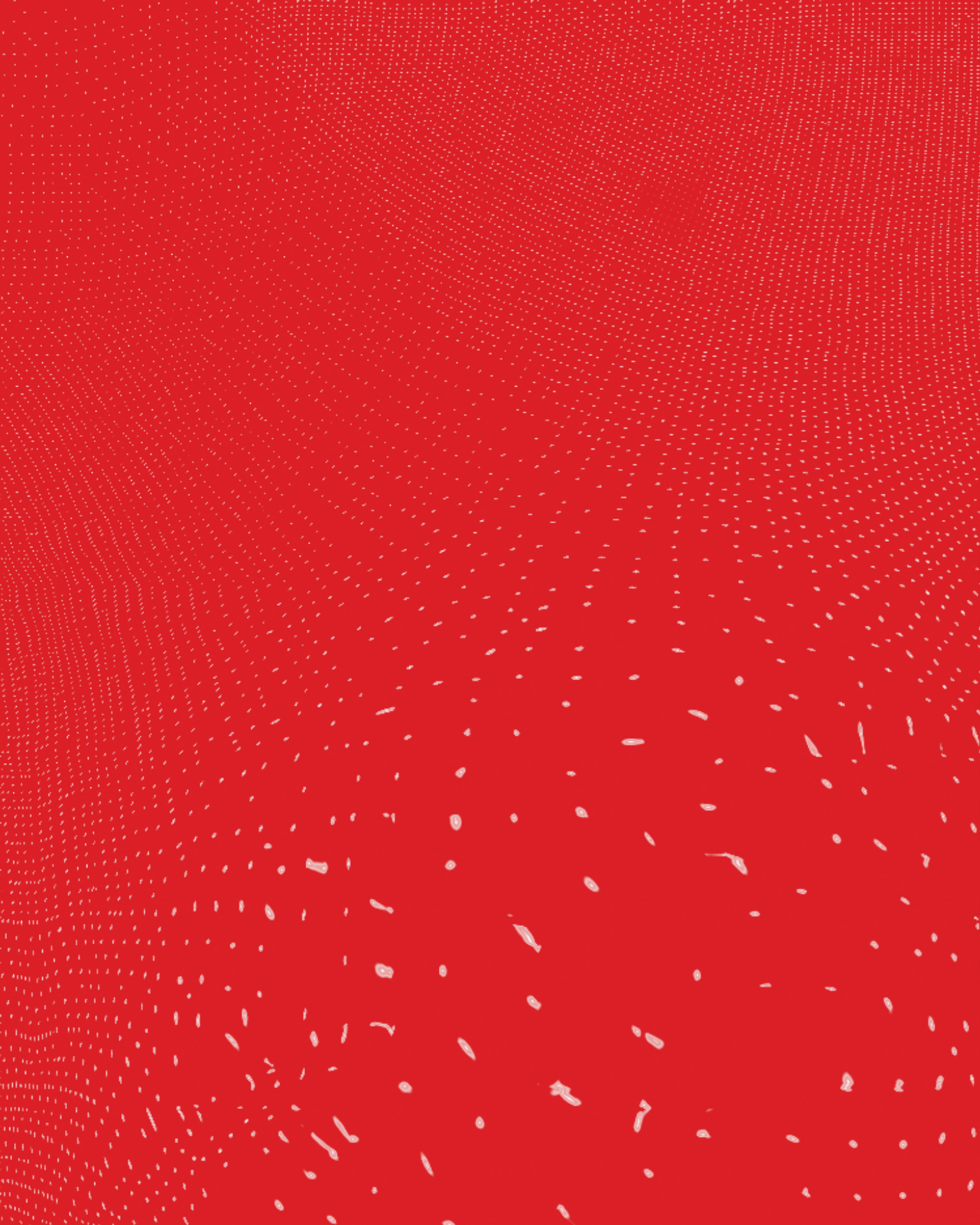


TABLE OF CONTENTS

LETTER FROM THE EXECUTIVE DIRECTOR	5
EXHIBITIONS AND GALLERY INTERVENTIONS	8
PUBLICATIONS	11
INNOVATIVE PROGRAMS	12
OUR VIBRANT COMMUNITY	20
INDIVIDUAL AND INSTITUTIONAL SUPPORT	26
VOLUNTEER AND DOCENT SUPPORT	30
FINANCIAL STATEMENTS	32
WAYS TO SUPPORT	34



LETTER FROM THE EXECUTIVE DIRECTOR

Dear Supporters and Friends,



Looking back over 2018 you will see the impact of many generous, creative people whose gifts of time, financial support, community spirit, passion for the arts, volunteerism, and collaboration animated the Rubin Museum. It's a great exercise in appreciation to take stock of a whole year and to see how many passionate people comprise this vibrant Rubin Museum community!

The Rubin's engine runs on creative power, fueled by visitors, donors, volunteers, community members, and curious global citizens. Thank you! It was a very special year, thanks to the gifts of many.

The Rubin has always been a place for big ideas and meaningful exchange, and in 2018 we centered the Rubin's offerings around a single unifying theme: *The Future Is Fluid*. Informed by Himalayan art, Eastern philosophies, and modern science, we engaged thousands of visitors and digital viewers in examining timeless questions about our individual and collective futures, our relationship with time, and the possibility that there is more beyond our aspirations and fears.

At the heart of our year of programming was a visually stunning display in the Museum lobby by artist Candy Chang and writer James A. Reeves, which invited visitors to write down their hopes and anxieties for the future and share them on the wall. Over the course of the year, we received over fifty thousand responses ranging from personal statements to political and spiritual reflections. We even had one marriage proposal on *A Monument for the Anxious and Hopeful!*

From an eighth-century Buddhist master to Albert Einstein to contemporary artists who provided illuminating new perspectives on the future, 2018 was a year full of experimentation and creativity that stimulated the mind and nourished the spirit. Together we prompted important conversations about everyone's future.

We are deeply grateful that you are part of the Rubin community. And we are even more excited about what we can accomplish together in the future.

Thank you for being part of the Rubin Museum family!

A handwritten signature in black ink, appearing to read 'Jorrit Britschgi'. The signature is fluid and stylized, with a large initial 'J' and 'B'.

Jorrit Britschgi
Executive Director

Matti Braun (b. 1968, Berlin); *R.T./S.R./V.S.*; 2003–2018; white mulberry and Norway maple tree discs, pond, water; courtesy of the artist and Esther Schipper, Berlin; photograph by Nicholas Calcott

THE FUTURE

A YEARLONG EXPLORATION

Since 2004 the Rubin has aimed to spark connections between Himalayan art and contemporary life. In 2018 we centered our exhibitions and programs on a unifying theme, reexamining our commonly held ideas about the future.

MAJOR PRESS QUOTES

“One of the biggest-thinking small museums in Manhattan.”

—HOLLAND COTTER, *NEW YORK TIMES*

“The Rubin offers up a perfect context . . . to limn the divine and countenance the dangerous.”

—ALPESH KANTILAL PATEL, *ARTFORUM*

“A lively dialogue between contemporaneity and tradition.”

—MIMI WONG, *ARTASIAPACIFIC*

“Tucked away on an unassuming corner in Chelsea, the Rubin’s intimate theater of Hindu and Buddhist history and mythology is represented by a fascinating assortment of objects, including scroll paintings (*thangka*), sculptures, and illuminated manuscripts.”

—SHARMISTHA RAY, *HYPERALLERGIC*

3

FUTURE FELLOWS LENT US THEIR MINDS AND TALENTS



NEUROSCIENTIST DAVID EAGLEMAN



Photograph by Filip Wolak

ARTIST CHITRA GANESH



Photograph by Filip Wolak

EARTH ETHICIST KARENNA GORE

MORE THAN

7,000

OF YOU WROTE LETTERS TO FUTURE VISITORS



Photograph by Filip Wolak



Photograph by Asya Gorovits

YOUR HOPES OUTPACED YOUR ANXIETIES AS MORE THAN

50,000

OF YOU CONTRIBUTED TO A MONUMENT FOR THE ANXIOUS AND HOPEFUL

EXHIBITIONS AND GALLERY INTERVENTIONS

Chitra Ganesh (b. 1975, Brooklyn, NY); *Silhouette in the Graveyard* (still); 2018; digital animation; courtesy of the artist. The One of Loving Kindness Maitreya; Mongolia; late 18th–early 19th century; gilt copper alloy with pigment; Rubin Museum of Art; C2005.12.1; (HAR 65413); photograph by David De Armas

THE SECOND BUDDHA: MASTER OF TIME

February 2, 2018–January 7, 2019

The Second Buddha brought together forty-one works of art from the thirteenth to the twentieth century with interactive technology. The exhibition told the story of the legendary Indian master Padmasambhava, known as “The Second Buddha.” It is said that in the past Padmasambhava concealed his teachings, known as treasure teachings, throughout the Tibetan landscape to be discovered by foretold disciples at opportune times in the future. To parallel such discoveries, visitors engaged with select objects to reveal their hidden meaning and content.

The Second Buddha: Master of Time was organized by the Rubin Museum of Art and the Frances Young Tang Teaching Museum at Skidmore College.

CHITRA GANESH: FACE OF THE FUTURE

January 19, 2018–November 4, 2018

In *Face of the Future* in the Art Lounge, Chitra Ganesh reimagined how visual languages of science fiction and fantasy take shape and proliferate around the world in print culture, literature, and cinema. In addition to showcasing her own new works on paper and collage-based pieces, Ganesh invited seven emerging artists—Maia Cruz Palileo, Nontsikelelo Mutiti, Tammy Nguyen, Jagdeep Raina, Sahana Ramakrishnan, Anuj Shrestha, and Tuesday Smillie—to expand and redefine the aesthetics of science fiction by creating posters that refer to a group of important, influential films largely outside the Western canon.



CHITRA GANESH: THE SCORPION GESTURE

February 2, 2018–January 7, 2019

The mudra known as the scorpion gesture is said to have unlimited power and potential for transformation. Walking by select artworks caused Chitra Ganesh's large-scale animations to appear as if by magic. Ganesh created five animated artistic "interventions" inspired by pieces in the Rubin's second- and third-floor permanent collection galleries, using the figures of Padmasambhava and Maitreya as points of departure. The animations built on Ganesh's longstanding investigation of mythology, imagery, and narrative in her multidisciplinary practice and were developed with and animated by the production and animation company the STUDIO.

A MONUMENT FOR THE ANXIOUS AND HOPEFUL

February 10, 2018–January 7, 2019

Inspired by Tibetan prayer flags and the anonymity of public spaces, artist Candy Chang and writer James A. Reeves asked Rubin visitors to engage with their community by sharing their anxieties or hopes on a card. *A Monument for the Anxious and Hopeful* in the spiral lobby invited visitors to express their apprehensions and expectations for tomorrow, as well as explore hundreds of individual meditations that ranged from personal, local, and specific statements to political, theoretical, and spiritual reflections.

A LOST FUTURE: SHEZAD DAWOOD / THE OTOLITH GROUP / MATTI BRAUN

February 23, 2018–February 4, 2019

The three-part exhibition *A Lost Future* challenged existing histories and speculative futures across cultures and in Bengal—a culturally rich region divided between present-day India and Bangladesh. The three contemporary artists featured in the exhibition—Shezad Dawood, The Otolith Group, and Matti Braun—engage an evocative range of mediums spanning virtual reality to an immersive lake along with painting, film, sculpture, and photography. *A Lost Future* presented still works by all three artists throughout the run, while the central cove rotated to highlight each one individually.



Photograph by Filip Wolak

GIFTS AND PURCHASES OF ART

The Rubin is a collecting institution and actively seeks works of art that will enhance and strengthen the collection. Gifts to the collection and strategic purchases help us present meaningful exhibitions that resonate with our visitors, provide additional learning and research opportunities for scholars, and represent the rich and varied traditions of Himalayan art. In 2018 the Rubin accessioned twenty-two objects into the collection, including two purchases and twenty gifts.



Seated Yogini; Tibet; 17th Century;
metalwork; Rubin Museum of Art; gift
of the Nyingjei Lam Collection and
Anna Maria and Fabio Rossi; C2018.3.1
(HAR 68463)

PUBLICATIONS



SPIRAL MAGAZINE: THE FUTURE ISSUE

The second issue of *Spiral*, a free annual magazine available in print and online, focused on the theme of the future. Readers were invited to consider a future that isn't fixed but fluid, as artists, neuroscientists, Buddhist practitioners, writers, illustrators, and more offered their perspectives on time. Highlights from the Future Issue included an extended feature from David Eagleman on how the brain processes time; new science fiction from Amal El-Mohtar; and an interview about time travel with James Gleick.

THE SECOND BUDDHA: MASTER OF TIME

By Elena Pakhoutova with contributions from Benjamin Bogin, Lewis Doney, and Daniel A. Hirshberg
Delmonico/Prestel, 2018

Published on the occasion of the exhibition *The Second Buddha: Master of Time*, this book investigates the art, histories, and legends of Padmasambhava, the Lotus Born, celebrated by Tibetans as “The Second Buddha.” He is believed to have been instrumental in converting the land and people of Tibet to Buddhism. His legends of transformation explore triumph over obstacles, the power of human emotions, and the interconnectedness of past, present, and future—all of which transcend specific cultures and eras.

A LOST FUTURE: SHEZAD DAWOOD / THE OTOLITH GROUP / MATTI BRAUN

By Beth Citron with contributions from Kodwo Eshun, Vishal Jugdeo, Anjalika Sagar, and Rosie Thomas
Rubin Museum of Art, 2018

The three-part exhibition *A Lost Future* challenged existing histories and speculative futures across cultures and in Bengal—a culturally rich region divided between present-day India and Bangladesh. The exhibition catalog focuses on the three featured contemporary artists with a poetic narrative inspired by the work of Shezad Dawood, an interview with members of The Otolith Group, and an essay on Matti Braun by curator Beth Citron. Each section has a unique visual layout created by designers selected by the artists.

K A R



M A

INNOVATIVE PROGRAMS

BRAINWAVE: THE FUTURE IS FLUID

What if we could remember the future and anticipate the past? How would such an understanding of time affect our sense of free will, destiny, perception, and memory? What if the future isn't fixed but fluid? Brainwave 2018 posed these elemental questions and expanded our notion of the future to include the layered experiences of time itself. Neuroscientist and *New York Times* bestselling author David Eagleman joined the Rubin as the first Brainwave Fellow, curating a series of talks, films, and experiences to explore time's impact on our brains, everyday life, and perception of the future.

KARMA: ANCIENT WISDOM MEETS THE FUTURE

This series of conversations, screenings, and performances, organized by Future Fellow Karenn Gore, brought speakers from various walks of life to discuss how ancient wisdom can shape Earth's future. Speakers included Marina Abramović, Laurie Anderson, Tiokasin Ghosthorse, Naomi Klein, Paul D. Miller, Meredith Monk, Mona Polacca, Phakchok Rinpoche, Erric Solomon, and Robert Thurman.

RIGHT: Juliana Huxtable (b. 1987, Bryan-College Station, Texas); *Untitled (Destroying Flesh)*, from the *UNIVERSAL CROP TOPS FOR ALL THE SELF-CANONIZED SAINTS OF BECOMING* series; 2015; courtesy of the artist and JTT Gallery

REFIGURING THE FUTURE: PERFORMANCE SERIES

Refiguring the Future featured works-in-progress by acclaimed New York artists centered on the concept of alternative futures. The artists turned a spotlight on traditionally marginalized stories, generating new pathways toward freedom and inclusivity. The series included performances by Jacolby Satterwhite, Morehshin Allahyari with Shirin Fahimi, and Juliana Huxtable.



FACE OF THE FUTURE: CHITRA GANESH

What tools and attitudes do we need to face the future? In tandem with her exhibition at the Rubin, Chitra Ganesh curated a set of conversations to explore multiple answers to this question, including The Future of Mood, The Future of Science Fiction, The Future of Evidence, The Future of Feminism, The Future of Responsibility, and The Future of Justice. Speakers included sujatha baliga, Guerrilla Girls, Linda Sarsour, Janelle James, and Mimi Mondal.

SPIRAL SESSIONS

Mindful practice can help us build a better future. In this summer workshop series, practice-based classes delving into yoga, meditation, astrology, sound baths, and more took place in the Museum before open hours. A tour through the galleries followed each class. This series was presented with New York Yoga + Life.

DREAM-OVER

September 29–30

The Dream-Over is a museum sleepover for adults. Dreamers slept in the Rubin Museum's galleries under a work of art selected especially for them. A Tibetan lama guided the group in Tibetan dream yoga, and a psychologist explored the meaning of dreams. In the morning a team of dream-gatherers gently nudged dreamers awake and wrote down their dreams as they recalled them. The dreamers were then debriefed over a traditional Tibetan breakfast of tsampa and yak butter tea.



Photograph by Chas Kimbrell

FILM

CABARET CINEMA FACE OF THE FUTURE

May–June 2018

Curated by Rubin Museum fellow and artist Chitra Ganesh, Cabaret Cinema featured sci-fi films, with each screening introduced by a special guest.

OTHER SCREENINGS

Walk With Me (multiple screenings)
Tibet: The Trail of Light (5 screenings)

MUSIC

SPIRAL MUSIC

Spiral Music presents acoustic music every Wednesday evening at the base of the Museum’s spiral staircase. Artists who specialize in music from the Himalayas and South Asia are invited to forge a connection between their music and the art in the galleries.

RHYTHMS OF INDIA

From timeless ragas to contemporary fusion, performers explore the varied traditions of Indian music in our intimate, cherrywood-lined theater.

NAKED SOUL

Naked Soul presents performances from top singer-songwriters without microphones or amplifiers, as if the music were, acoustically speaking, naked. The musicians in the series draw on universal themes inherent in Himalayan art—spirituality, peace, tolerance, wisdom, and compassion—on select Friday evenings.

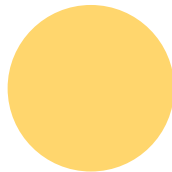
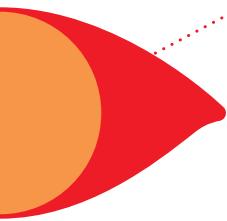
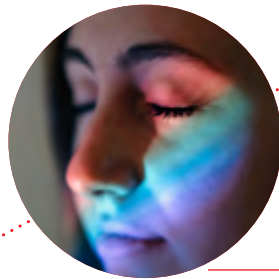
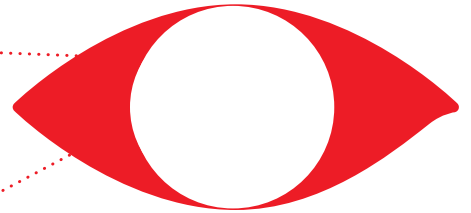
TRANCE/FORM

At this after-hours dance party distinctions between music, art, film, and dance dissolve in a night of inner exploration, authentic connections, and fearless expression.



Photo courtesy of Innov Gnawa





BREATHE

In these ongoing events, visitors learn how the teachings of the masters of old relate to contemporary life with some of the leading teachers of yoga and mindfulness meditation.

MINDFULNESS MEDITATION

This weekly program offers mindfulness sessions inspired by a work of art led by Sharon Salzberg and other teachers. The series is also a weekly podcast available for free online.

TEACHERS

Kimberly Brown
Tracy Cochran
Lama Aria Drolma
Kate Johnson
Dolpo Tulku Rinpoche
Sharon Salzberg
Dan Siegel
Shante Smalls

AWAKENING PRACTICE

Contemplative practice has its roots in the living traditions of the Himalayas. This morning mindfulness series explores the connections between Himalayan culture, art, and practice. Each forty-five-minute session includes twenty minutes of guided meditation that explores different approaches, including mantra, mudra, and mindfulness.

SCHOOL AND FAMILY PROGRAMS

LOSAR FAMILY DAY

February 18

Families joined us to celebrate the Lunar New Year with an afternoon of art, crafts, and music kicking off the year of the Earth Dog. Activities included traditional celebrations, family tours of the galleries, Himalayan music, and Earth Dog-themed activities and art projects.

BLOCK PARTY

June 17

For the fifth year, the Museum closed off West 17th Street for a community Block Party designed for families. Thousands of New Yorkers came to “make the future” with art and activities inspired by the annual theme of the future. The Block Party was made possible by New York Life.

FAMILY SUNDAYS

Families with children ages three and older were invited to participate in afternoons full of family-friendly activities every Sunday throughout the year. Visitors enjoyed art-making in the Education Center and family tours and themed searches in the galleries.

MATH AND MANDALAS

Math and Mandalas, our free, three-session residency program for low-income students from K–12 Title 1 and public schools, provides integrated arts and math learning opportunities using the Rubin’s collection of mandala paintings. Mandala paintings, geometric diagrams of celestial palaces that play an important role in Himalayan art and culture, are well suited to teaching geometry and visualizing complex mathematical concepts. Math and Mandalas makes cross-curricular connections to Common Core State Standards in math and English language arts through classroom instruction, a Museum tour, and a printmaking workshop. In addition, two professional development workshops trained K–12 educators on facets of the program applicable to their classroom practice.



Photograph by Filip Wolak

COMMUNITY PARTNERSHIPS

HIMALAYAN HERITAGE PROGRAMS

Open to all, monthly Himalayan Heritage programs invite attendees to discover aspects of Himalayan cultures through discussions, gallery tours, films, and meetings with guest speakers. Presenting partners in 2018 included India Home, Center for Universal Peace, Palyul Monastery, Bhutan Film Trust, Padmasambhava Buddhist Center, and Golden Drum. Program topics included Saga Dawa: Celebrating the Buddha's Birth, Enlightenment, and Parinirvana; Cham Dance: Past, Present, and Future; Everyone Is Divine: Celebrating the Sikh Festival Vaisakhi; and more. In 2018 the Rubin hosted the first Himalayan Heritage College Meetup, a student-led networking and art-making event for young people of Himalayan descent or relation.

UNIVERSITY PARTNERSHIPS

The University Partnership Program at the Rubin Museum provides opportunities for academic communities to access the traditional arts and cultures of the Himalayan region while making creative connections to other world cultures. Our 2018 university partners included New York University, St. Francis College, and The New School.



Photograph by Filip Wolak

OUR VIBRANT COMMUNITY

Since the founding of the Museum in 2004, the Rubin has served 2,216,673 visitors. In 2018 the Rubin welcomed 169,544 visitors and had 570,000 digital engagements.

**YOUR
SUPPORT
MAKES
POSSIBLE**

32,877

visitors to free K2 Friday nights



Photograph by Filip Wolak

694

attendees to Losar Family Day



Photograph by Filip Wolak

3,402

attendees to free
Family Sundays



Photograph by Filip Wolak

330

visitors with varied abilities, Alzheimer's, and dementia attended free access programs

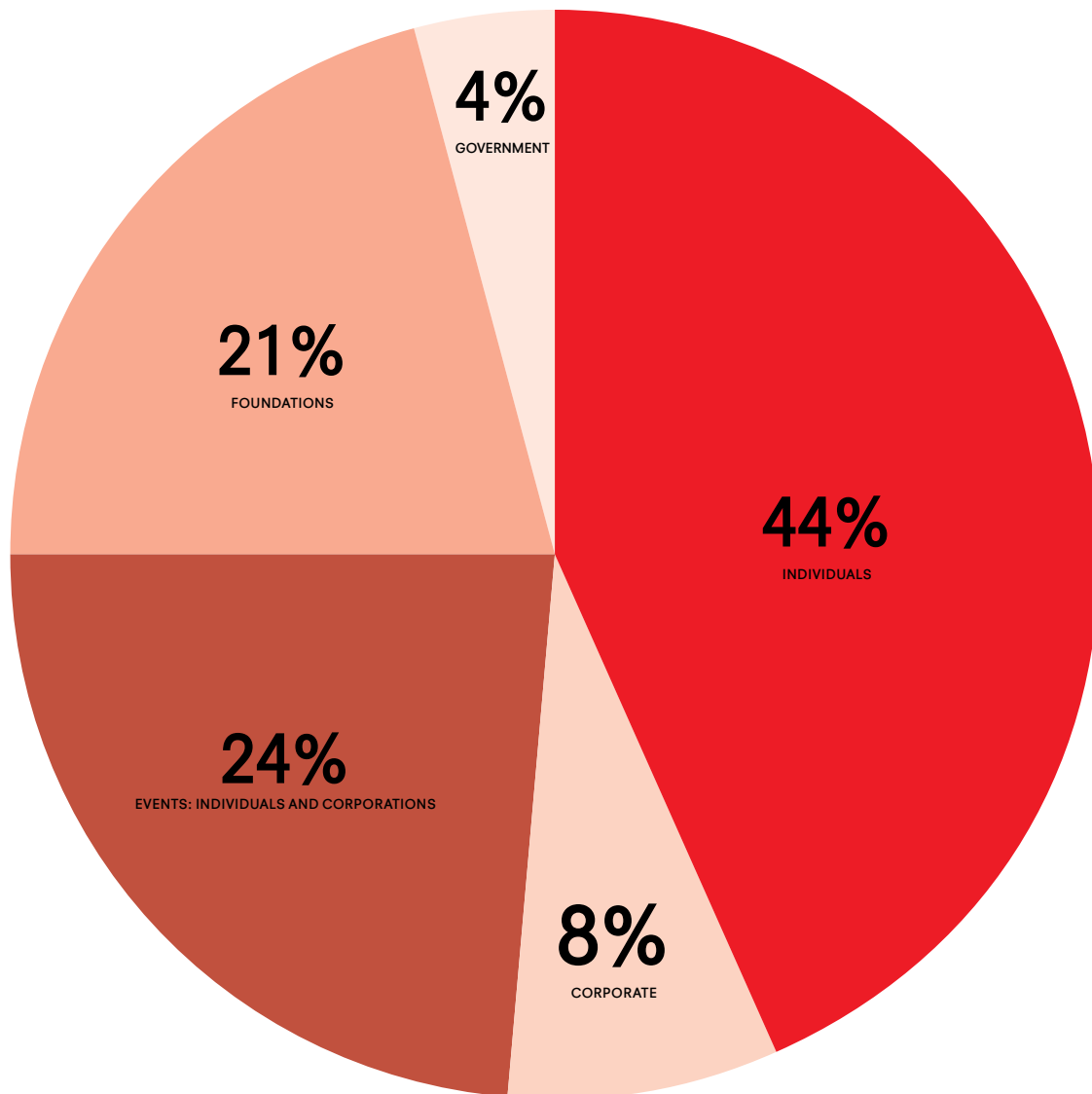


Photograph by Asya Gorovits



Photograph by Filip Wolak

THANK YOU TO OUR 2018 DONORS



MEMBERS MATTER

Our four thousand members are the life of the Rubin! Your support is what makes the Rubin such a warm and special place. You help us grow and evolve. You bring your insights and love of learning. We are so grateful!

In 2018 our loyal members came together for many events and special moments.



Photograph by Filip Wolak

“When I tell people about the Rubin I almost hesitate to call it a ‘museum’ because it really is so much more than that. To different people and at different times the Rubin is a museum, cultural center, brasserie, recording studio, movie theater, spiritual home, café, concert hall, block party, academic hub, and more. As a Visionary Circle member I get to be right in the middle of all it.”

—MAX MEEHAN, VISIONARY CIRCLE MEMBER

“Walking through the doors of the Rubin is like walking down the steps of a plane that’s taken you to another land. Every visit is a new experience, and the people who inhabit it are endlessly warm and welcoming.”

—SUSAN DENG, MEMBER

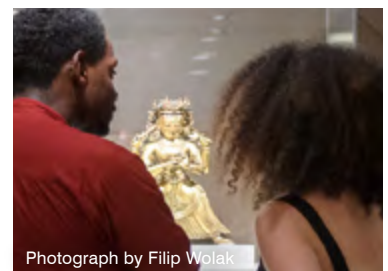


Photograph by Filip Wolak



Photograph by Asya Gorovits

Exclusive member tours and events included studio visits and private Shrine Room hours.



Photograph by Filip Wolak

INDIVIDUAL AND INSTITUTIONAL SUPPORT

A huge Rubin thank you to all of the generous supporters who made gifts of cash and pledges in 2018! It is because of you that the Rubin Museum makes the art and ideas from the Himalayas come alive, helping to make sense of the light and dark of humanity and foster the kind of world in which we all want to live—one that is compassionate, inspired, and meaningful.

Special thanks to the Rubin's Year of the Future visionary supporters Bob and Lois Baylis, Rasika and Girish Reddy, Shelley and Donald Rubin, Ann and Matthew Nimetz, and the Ellen Bayard Weedon Foundation!

\$100,000+

Fred Eychaner
Ann and Matt Nimetz
Shelley and Donald Rubin
Vanguard Charitable

\$50,000-\$99,999

The Andrew W. Mellon Foundation
Lois and Bob Baylis
Ellen Bayard Weedon Foundation
Christopher J. Fussner
Agnes Gund
Hongwei Li
New York Life
NYC Department of Cultural Affairs
Rasika and Girish Reddy
Zhiguan Museum of Art

\$25,000-\$49,999

Akhoury Foundation
Anonymous
Barbara Bowman
The Dalio Family
Noah P. Dorsky
E. Rhodes & Leona B. Carpenter Foundation
Lisina M. Hoch
National Endowment for the Arts
Alexandra and Eric Schoenberg

\$10,000-\$24,999

Argo Real Estate
Blakemore Foundation
Capco
Con Edison
Daphne Hoch Cunningham and John Cunningham
Anne E. Delaney
Aashish and Dinyar Devitre
Dan Gimbel of NEPC, LLC
Douglas Durst

Google

Eva and Yoel Haller
Himalayan Art Resources
IBM
Gene and Terry Kaufman
Yury Khokhlov
William E. Mayer
MultiPlan, Inc.
Deven and Monika Parekh
Tulku Tsultrim Pelgyi
Beatrice and David Pritzker
Carlton Rochell and Kathleen Kalista
Basha Frost Rubin & Scott Grinsell
Eileen Caulfield Schwab
Manoj and Rita Singh
Tiger Baron Foundation
Uovo
VOS Selections

\$5,000-\$9,999

AB – Bernstein Private Wealth Management
Accurate Background
Anonymous
Bank of New York Mellon
Barnes & Noble
Barneys New York
Bloomberg Philanthropies
Carlo and Micól Schejola Foundation
Lisa Cavallari
Constellation Culinary Group
The Dana Alliance for Brain Initiatives
John and Fausta Eskenazi
Fidelity Charitable Gift Fund
Gertler & Wente Architects
Cheryl Henson & Ed Finn
Peter L. Hutchings and Martha Wolfgang
India Tourism, New York
Georgia Levis
Sonny and Gita Mehta

MetLife
Mark A. Norell and Vivian Pan
Gerry Ohrstrom
Barbara Marcin Ullman
Tiffany & Co.

\$1,000-\$4,999

American Chai Trust
Andrew Sabin Family
Foundation
Anonymous
Stanley and Marion Bergman
Laura and Fred Bidwell
Bonhams
Abby Boxer
Loreen Arbus
Mary Jane and Charles Brock
Alessia Bulgari
Anthony Capellupo
Christie's
Teresa Duffy
Pamela Farkas and Andrew
Paul
Vaughin Folkert
Andrew and Tracy Foster
Zachary and Jacqueline
Goldstein
Tommy Yang Guo
Carol and Richard Hochman
Lillie Hodges and Brett Hodges
Phyllis Kao
Darcy Katris
Kathryn Keneally
Kenneth and Nira Abramowitz
Foundation
Susan Kotcher and Steven
Carbo
Jeffrey and Leah Kronthal
Richard and Mary Lanier
LaPlaca Cohen
Ruth Lekan
Ethan Leonard
Stuart Leyton and Linda
Wambaugh
Edward Lin

Lynn Levenberg Ltd.
Lostand Foundation
Liora Manne
Margot and Thomas Pritzker
Family Foundation
Bonnie and Sam Marks
Jim and Mary Ellen McCarthy
Max Meehan
Richard and Ronay Menschel
Friedrike Merck
Michael J. and Beata
McCormick
Milton and Sally Avery Arts
Foundation, Inc.
Peter Miscovich
David R. Nalin
Kathleen Nicholson
Nicholas Pavlik
Peaceful Wind
Diana and Eugene Pinover
Brette Popper and Paul Spraos
Amy and Robert Poster
Josh Radnor
Cye E. Ross
Laurel Rubin
Alfred and Ann Ruesch
The Ruth and Vernon Taylor
Foundation
Wiltraud Salm
Susan Sawyers
Charna E. Sherman
Howard and Sarah Solomon
Studio in a School
Tongtong Zhu
Joern Truemper
John and Susy Wadsworth
William C. Dowling, Jr.
Foundation
WWW Foundation

\$500-\$999

Janet Abraham
Andrew Bast, Zubatkin Owner
Representation, LLC
Anonymous

Helen-Jean Arthur
Bruce Baber
Frank and Stacey Beck
The Estate of Isabel T.
Bedrosian
Afshan Bokhari
Jorrit Britschgi
John Cartier
Karen Caruso
Emy Cohenca and Nevine
Michaan
Carmen Dal Pont
Stephen and Sharon Davies
Errol Dawkins
Elizabeth De Cuevas
Elke Dehner
Joyce S. Dubensky
The Frederick P. Lenz
Foundation for American
Buddhism
Hart and Nancy Fessenden
John and Berthe Ford
Jo Jagoda
Dessa Goddard and Bruce
Maclaren
Jan and Steven Golann
Prasanna Govindankutty
Ellen Grace
Leah R. Jacobs
Shirley Jackewicz
Allison Jurjens
Dominik and Madeleine Keller
Sandra Leitner
Douglas Lind
Robin McCabe
Bob Moss and Michela Nonis
The New York Community Trust
Jim Neuberger and Helen
Stambler Neuberger
Foundation
Mary Nittolo
Carol Patterson and
Tom Campbell
Preston L. Pittman and
Thomas F. Hayden*

Jesse Y. Ramos
Joumana Rizk
Michael Robinson
Marya Roland
Richard Royce
Beth Rudin DeWoody
Dennis and Regina Santella
Kathrin Scheel-Ungerleider
Frances Schwiep
Oleg Shorokhov
Constance and Stephen Spahn
Sotheby's
Spencer Throckmorton III
Carol Tolan
Hanson Tse
Richard and Irene Van Slyke
Mildred Weissman

*Thomas F. Hayden passed away in September 2019. The Rubin honors Tom and gratefully acknowledges his love and support of the Rubin Museum.

LENDING PARTNERS AND IN-KIND DONORS

Thank you to the many individuals and companies that lent artworks and gave gifts in-kind, including gifts of technology, auction items, and wise counsel. We are grateful to you!

Joshua Adler
Ghiora Aharoni
Miya Ando
Anne and Joe Andrew
Walter Arader
Asian Art Museum
Robert and Lois Baylis
Bob Bielecki
Alain Bordier
BQ Gallery, Berlin
Matti Braun and Esther
Schipper Gallery
Bruce Miller Collection
Candy Chang
Charlotte Feng Ford Collection,
courtesy Elizabeth Dee,
New York
Conservation Framing
C. V. Starr East Asian Library,
Columbia University
Shezad Dawood, courtesy
Timothy Taylor, London/New
York
The Ekard Collection
Ethnographic Museum at the
University of Zurich
Etro
Eugene "Luke" Pollock
Collection
Foundation Henri-Cartier
Bresson
Chitra Ganesh
John Giorno and Elizabeth Dee,
New York
Lisina Hoch
Jacques Marchais Museum
of Tibetan Art
Joan Jonas
Alice S. Kandell
Ernst Karel
Karuna – Shechen
Kesang Lamdark
Christine Sun Kim and Carroll
/Fletcher Gallery
Lieberman Family Collection,
courtesy Fine Art Advising
Services
Jawshing Arthur Liou
Robert Aiki Aubry Lowe
LUX, London
Magnum Photos
Beata and Michael McCormick
Michael Monhart
Alexandra Mor
Museum der Kulturen Basel
Museum Rietberg
Nontsikelelo Mutiti
Newark Museum
Tammy Nguyen
Nomadic Expeditions
Nyingjei Lam Collection
The Otolith Group
Maia Cruz Palileo
Jaroslav Poncar
Pritzker Collection
Private Collection
Private Collection, Hamburg
Éliane Radigue
Jagdeep Raina
Sahana Ramakrishnan
James R. Reeves
Matthieu Ricard
Rossi & Rossi
Shelley and Donald Rubin
Sylvie Sauveniere
Manoj Singh
Pallavi Shastri
Anuj Shrestha
Tuesday Smillie
Laetitia Sonami
Martin and Toni Sosnoff
Charwei Tsai
Trollback + Company
Venerable Aye Tulku and Jane
Werner-Aye
Hildegard Westerkamp

MOST GENEROUS LIFETIME SUPPORTERS

Enormous thanks to the generous individuals, companies, and foundations that gave gifts of \$100,000 or more during the life of the Rubin Museum!

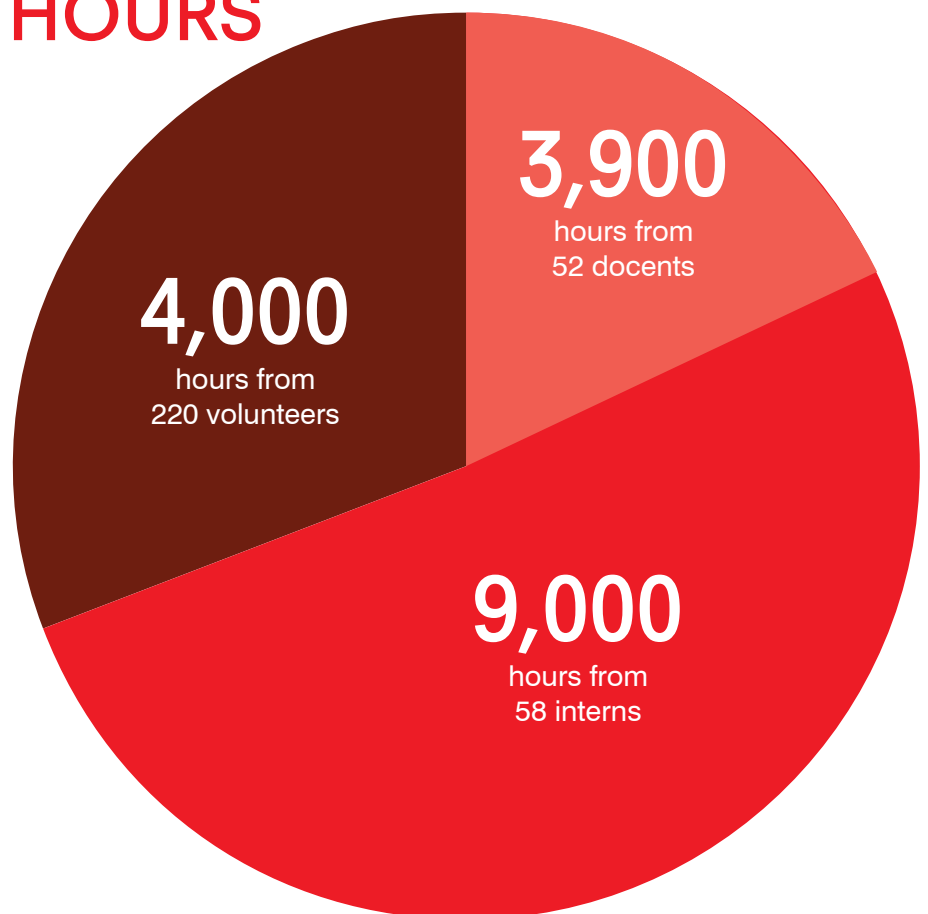
AB – Bernstein Private
Wealth Management
Akhoury Foundation
Anonymous
Lois and Bob Baylis
Stanley and Marion Bergman
The Booth Ferris Foundation
Samuel Botero and Emery
von Sztankoczy
Barbara Bowman
Dalio Philanthropies
Noah P. Dorsky
E. Rhodes & Leona B.
Carpenter Foundation
Ellen Bayard Weedon
Foundation
Fred Eychaner
Christopher J. Fussner
General Atlantic LLC
Agnes Gund
Eva and Yoel Haller
Hamlin Capital Management
LLC
Henry Luce Foundation
Lisina M. Hoch
Peter L. Hutchings and
Martha Wolfgang
Vinish Jain
Robert and Carola Jain
JPMorgan Chase
Jaishri and Vikas Kapoor
Navin Kumar
Margot and Thomas Pritzker
Family Foundation
William E. Mayer
MetLife
MultiPlan, Inc.
National Endowment for
the Arts
National Endowment for
the Humanities
The New York Community Trust
New York Life
New York State Council on
the Arts

NGN Capital
Ann and Matt Nimetz
NYC Department of Cultural
Affairs
The Pierre and Tana Matisse
Foundation
Beatrice and David Pritzker
Rasika and Girish Reddy
Rockefeller Philanthropy
Advisors
Basha Frost Rubin & Scott
Grinsell
Shelley and Donald Rubin
Carlo and Micól Schejola
Foundation
Eric and Alexandra Schoenberg
Eileen Caulfield Schwab
The Shelley & Donald Rubin
Foundation
The Sikh Art and Film
Foundation
Manoj and Rita Singh
Christopher Stamos
John J. Studzinski
U.S. Trust
Vanguard Charitable
Jeffrey and Suzanne Walker

VOLUNTEER AND DOCENT SUPPORT

Volunteers contribute to many areas of the Museum, providing docent tours, assisting with education programs and big events like the Block Party, and helping with other important services. Thank you to the volunteers who gave their time and expertise in 2018!

16,900 TOTAL VOLUNTEER HOURS



VOLUNTEERS, DOCENTS, AND INTERNS SUPPORT MANY AREAS OF THE MUSEUM:

School and Family Programs

Membership

Communication and Marketing

Curatorial

Tibetan Language Support

The Shop

Programming

Himalayan Heritage Programs

Development

Collections Management

Evaluation

Access and Community Outreach

And more



Photograph by Filip Wolak

STATEMENT OF FINANCIAL POSITION

at December 31, 2018

ASSETS

Current Assets

Cash and cash equivalents	\$358,660
Unconditional promises to give	140,817
Restricted for future periods and programs	372,789
Accounts receivable	165,149
Inventory	787,739
Prepaid expenses and other current assets	139,172
Investments in marketable securities	130,699,782

Total Current Assets **\$132,664,108**

Property and Equipment **\$ 36,467,992**

Total Assets **\$169,132,100**

LIABILITIES AND NET ASSETS

Current Liabilities

Accounts payable and accrued expenses	\$1,438,545
Tenant security deposits	119,123
Deferred membership and other income	21,651
Total Current Liabilities	\$1,579,319

Net Assets

Unrestricted	
Board-designated funds	\$104,453,102
Other unrestricted	36,208,667
Temporarily restricted	1,891,010
Permanent restricted	25,000,002
Total Net Assets	\$167,552,781

Total Liabilities and Net Assets **\$169,132,100**

STATEMENT OF ACTIVITIES

for the year ended December 31, 2018

REVENUE AND OTHER SUPPORT

Public Support

Contributions and donations	\$474,708
Grants and sponsorships	553,166
Special event revenue	452,055
Less: direct expenses	(180,654)
Membership dues	542,775
Total Public Support	\$1,842,050

Revenue from Programs and Activities

Museum admission fees	\$473,525
Program fees	408,050
Facility rental income	396,579
Merchandise and catalog sales	645,541
Other revenue	69,623
Total Revenue from Programs and Activities	\$1,993,318

Rental Income	\$1,209,426
Net Investment Income	\$(8,718,635)

Total Revenue, Gains, and Other Support **\$(3,673,841)**

EXPENSES

Program Services

Collections and exhibitions	\$4,838,680
Publications	200,887
Programs & engagement	2,765,006
Shop	828,864
Public relations and marketing	1,729,361
Total Program Services	\$10,362,798

Supporting Services

Management and general	\$4,127,539
Development and special events	1,368,407
Total Supporting Services	\$5,495,946

Real Estate Operations

Collections Items Purchased Not Capitalized	\$238,516
---	-----------

TOTAL EXPENSES **\$16,738,837**

Change in Net Assets **\$(20,412,678)**

WAYS TO SUPPORT

The Rubin Museum of Art is an arts and cultural hub in New York City’s vibrant Chelsea neighborhood that inspires visitors to make connections between contemporary life and the art and ideas of the Himalayas and neighboring regions. With a diverse array of thought-provoking exhibitions and programs—including films, concerts, and onstage conversations—the Rubin provides immersive experiences that encourage personal discoveries and spark new ways of seeing the world. With the dedicated support of numerous members, donors, and other generous partners, the Rubin is able to create a space for fostering cross-cultural connections and exploring ideas that have extended across history to the present day.

BECOME A MEMBER

Rubin members receive benefits that include invitations to exclusive previews and tours, free admission to Mindfulness Meditation, unlimited entry to the galleries, and much more. Membership to the Rubin Museum of Art is also a special gift that friends and family of all ages can enjoy throughout the year.

JOIN, RENEW, OR UPGRADE:

ONLINE

RubinMuseum.org/support

BY PHONE

212.620.5000 x313

BY MAIL

The Rubin Museum of Art
ATTN: Membership
140 West 17th Street
New York, NY 10011

ON SITE

Speak with the admissions staff at the Museum

GIVE A GIFT MEMBERSHIP

If you love the Rubin and visit whenever you have the chance, consider the gift of membership. A Rubin membership makes a thoughtful gift and allows you to share a place that is special to you and support your favorite cultural space.

Learn more at RubinMuseum.org/membership. After selecting a membership category, you will have the option to make it a gift. We will send your recipient a new member welcome packet and a letter stating the membership is a gift from you.

MAKE A DONATION

Support the Rubin Museum of Art and you'll be helping to fund six gallery floors of exquisite art from the Himalayan region and hundreds of talks, onstage conversations, films, performances, educational initiatives, workshops, and access programs for all audiences.

ANNUAL FUND

Tax-deductible contributions to the annual fund provide important support that allows the Museum to present exciting exhibitions and programs year-round. Supporters that give \$5,000 or more per year are recognized on a panel in the Museum.

PLANNED GIVING

A growing number of generous supporters are helping secure the future of the Rubin by making a planned gift. There are many creative and flexible gift planning options that can benefit you, your loved ones, and the Museum.

MATCHING GIFTS

Many companies match employees' tax-deductible contributions. Please submit the matching gift form provided by your employer with your membership dues or donation.

GIFTS IN HONOR AND MEMORY

Honor and remember someone important in your life by giving a donation on his or her behalf.

CONTACT

Ansley Davenport
Senior Manager, Membership and Development Operations
212.620.5000 x315
adavenport@rubinmuseum.org

VOLUNTEER

The Rubin Museum offers volunteers the opportunity to gain exposure to the workings of an art museum and to contribute valuable services to various departments within the Museum. Candidates must be willing to make a long-term commitment to serve as a volunteer and should have an interest in the Museum's exhibitions and programs. In appreciation of their dedication, all active volunteers receive special benefits, including free admission, discounts at the Museum's shop and café, and an invitation to an annual appreciation event.

CONTACT

Audrey Shea
212.620.5000 x328
volunteersandinterns@rubinmuseum.org

BECOME A DOCENT

The volunteer docent program at the Rubin Museum of Art facilitates a connection between Museum visitors and Asian art through research and intensive training. Our docents organize and present thematic gallery tours, gallery talks, and other educational initiatives.

CONTACT

Laura Sloan
Manager of Docent and Access Programs
lsloan@rubinmuseum.org

